

Blazer Sizing Guide.

Mens Regular fit Schooner



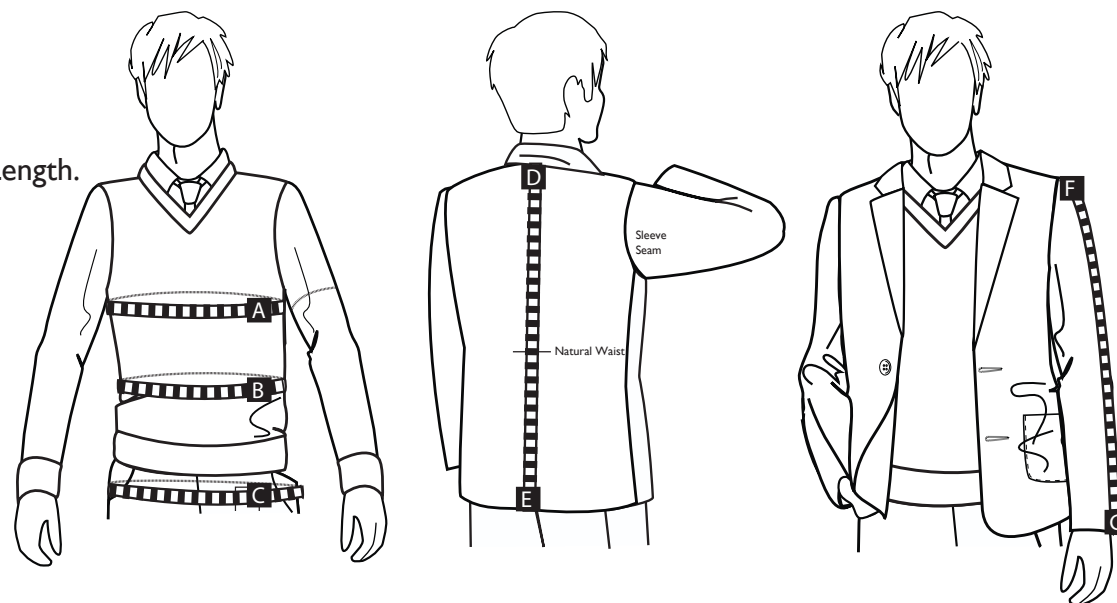
Body Measurements- Inches			Jacket Measurements cm's Short		Jacket Measurements cm's Regular		Jacket Measurements cm's Long	
Chest	Waist	Seat	Jacket Length	Sleeve Length	Jacket Length	Sleeve Length	Jacket Length	Sleeve Length
34	31.5	35	68	56.5	72	60.5	76	64.5
36	33.5	37	70	59	74	63	78	67
38	35.5	39	71	59.5	75	63.5	79	67.5
40	37.5	41	72	60	76	64	80	68
42	39.5	43	73	60.5	77	64.5	81	68.5
44	42	45	74	61	78	65	82	69
46	44	47	75	62	79	66	83	70
48	46	49	75	62	79	66	83	70
50	48	51	75	62	79	66	83	70
52	50	53	75	62	79	66	83	70
54	52	55	75	62	79	66	83	70
56	54	57	75	62	79	66	83	70
58	56	59	75	62	79	66	83	70
60	58	61	75	62	79	66	83	70

- A- Measure the circumference of your chest at the fullest part.
- B- Measure the circumference of your waist at the fullest part.
- C- Measure the circumference of your seat at the fullest part.
- D-E- Nape of neck to hem (bottom of collar to the hem) This is your Jacket Length.
- F-G- Straight sleeve (sleeve crown to cuff edge) This is your sleeve length.

*Measurements A, B and C are all best taken as actual body measurements. This will provide more accurate measurements than when taken with clothes on.

Using these measurements select your appropriate size.
Perry Club blazers are sold in chest sizes.

You then have the choice to select whether you would like our short, regular or long length style.



Please note- These are average measurements only. Garments may vary slightly due to production tolerance.